

1201 W. IRONWOOD DRIVE COEUR D'ALENE, IDAHO

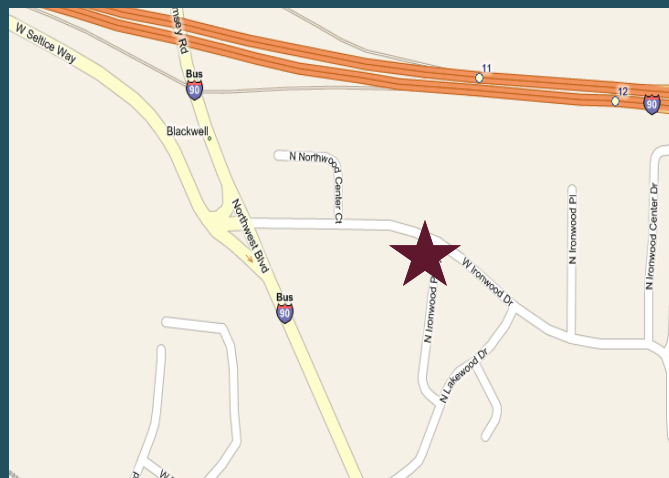
OFFICE BUILDING FOR LEASE

\$14/SqFt

NNN

46,604 SqFt

- Open floor plates
- \$14/SqFt/yr, NNN
- 46,604 square feet
- Currently setup for call center
- 4 floors, ADA accessible
- 5/1,000 parking stalls
- Located close to hospital
- Good Access to I-90
- Remodeled in 2001



For more information,
please contact:

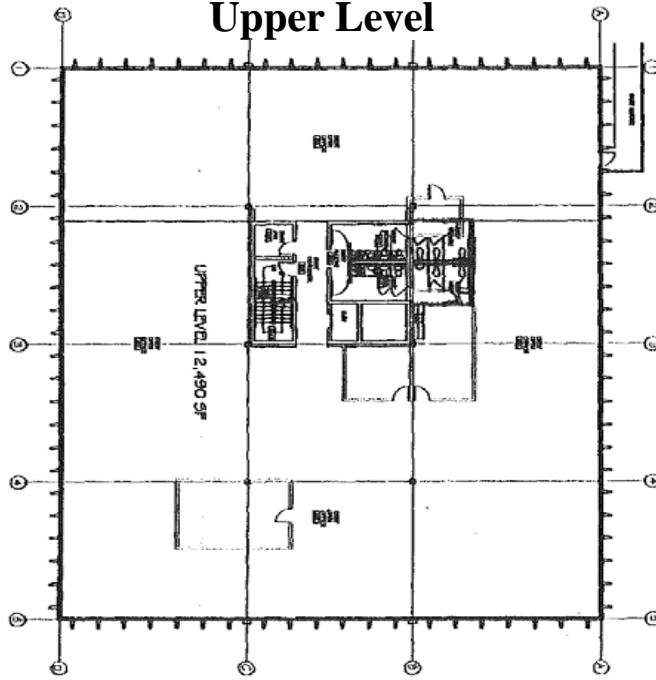
CASEY BRAZIL
Branch Manager/Associate Broker
208.770.2595- Direct
casey.brazil@khco.com

**KIEMLE &
HAGOOD
COMPANY**

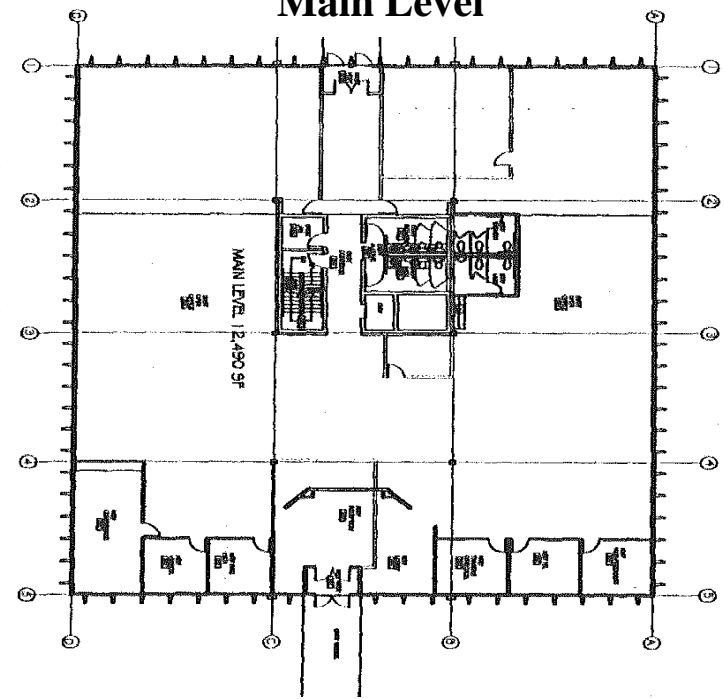
Information is deemed reliable, but not guaranteed. No representation or warranty expressed or implied. Broker not responsible for changes, errors, or omissions. All square footages are for convenience only. All critical measurements shall be done by Lessee or Buyer.

Floor Plan

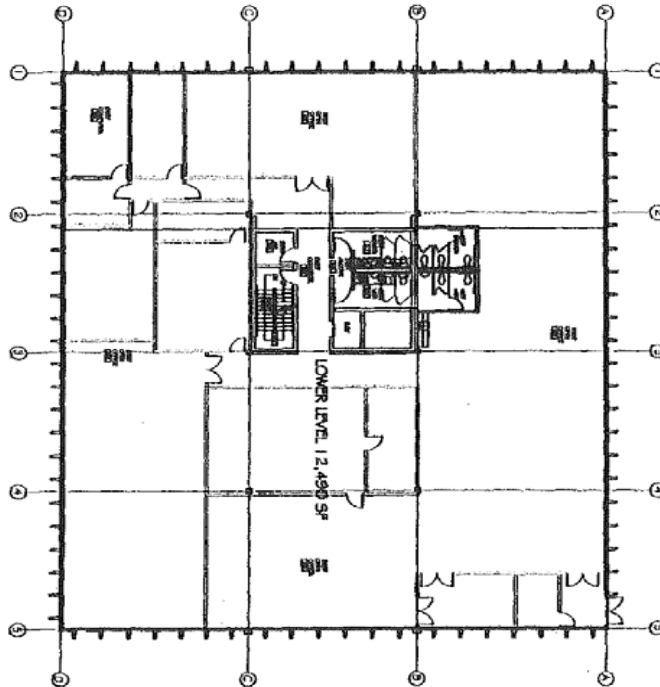
Upper Level



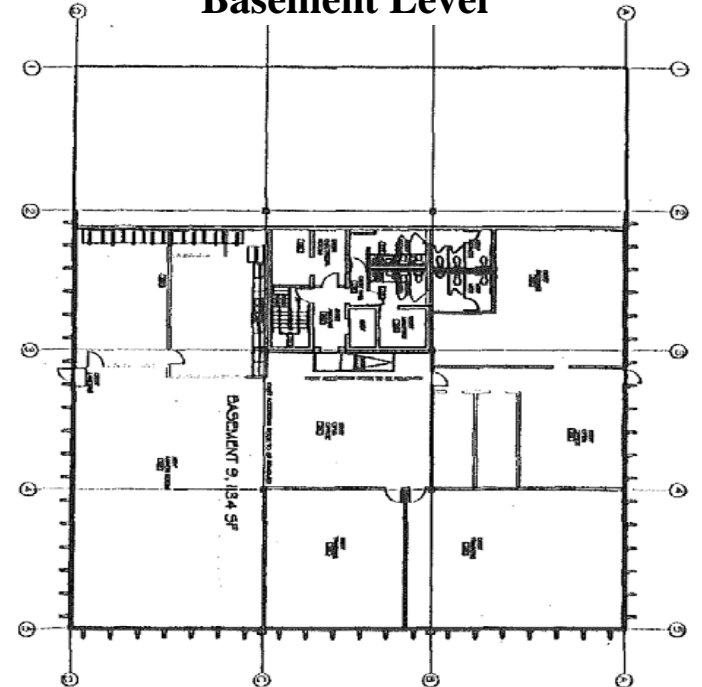
Main Level



Lower Level



Basement Level



For more information,
please contact:

CASEY BRAZIL
Branch Manager/Associate Broker
208.770.2595~ Direct
casey.brazil@khco.com

**KIEMLE &
HAGOOD
C O M P A N Y**

Information is deemed reliable, but not guaranteed. No representation or warranty expressed or implied. Broker not responsible for changes, errors, or omissions. All square footages are for convenience only. All critical measurements shall be done by Lessee or Buyer.