

OFFICE SPACE FOR LEASE

Riverstone III

2065 West Riverstone Drive, Coeur d'Alene, Idaho 83814



For more information,
please contact:

CASEY BRAZIL

Branch Manager &
Associate Broker

208.770.2595

Casey.brazil@khco.com

CHRIS SCHREIBER, CCIM

Associate Broker

208.770.2593



**KIEMLE &
HAGOOD
COMPANY**

Class A, professional office building, recently constructed and only three suites available, lake views, easy access from Northwest Boulevard & Seltice Way, good onsite parking and walking distance to restaurants making this a prime location!

Leasing Information:

TWO SUITES LEFT!

Suite 205: 222± SqFt—\$444/mo

Suite 207: 653± SqFt—\$18.00/Sqft NNN

Available Suites:

~~Suite 104: 910± SqFt~~ **LEASED**

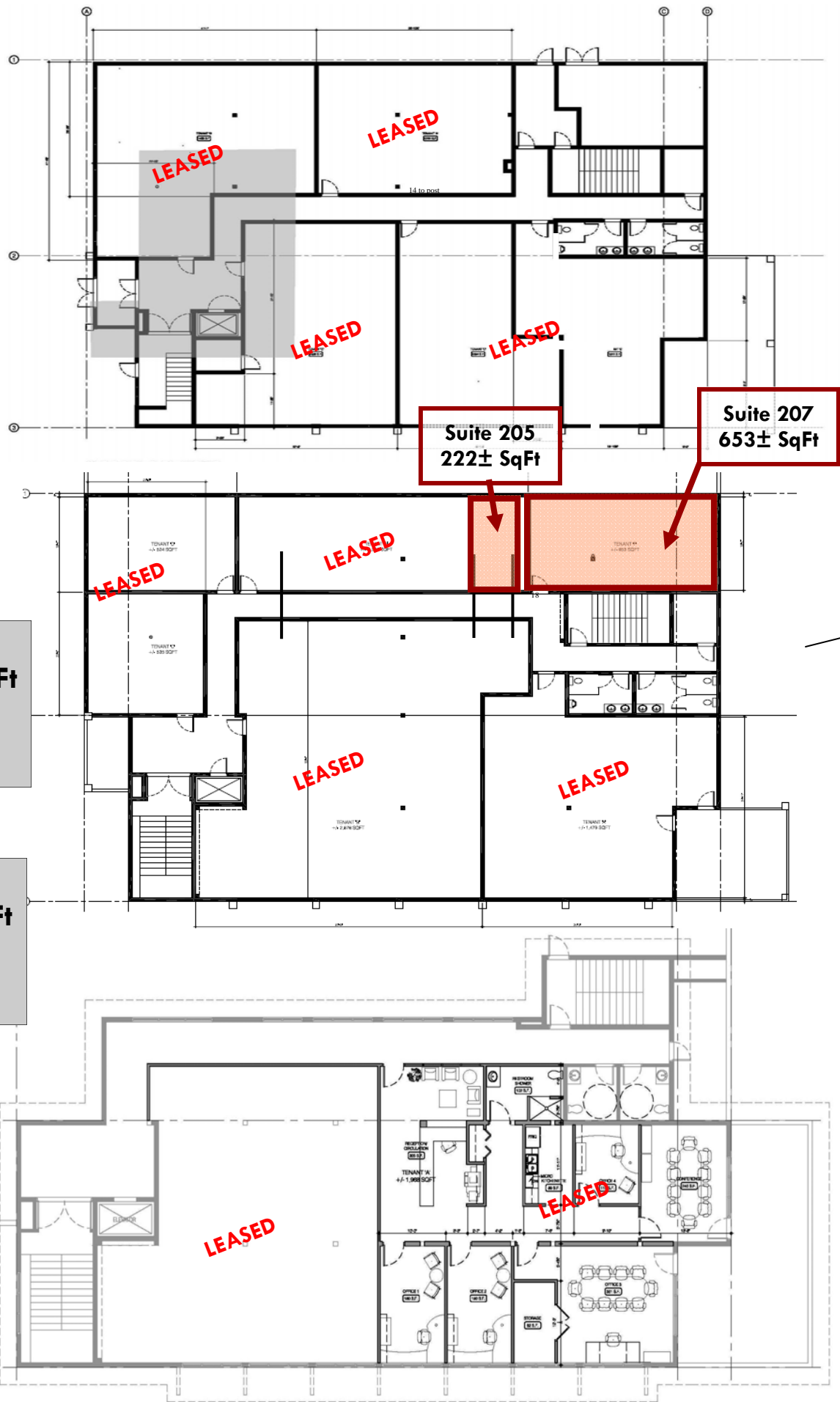
~~Suite 201: 924± SqFt~~ **LEASED**

~~Suite 302: 1,950± SqFt~~ **LEASED**

*Contact listing agent for current leasing incentives!

Information is deemed reliable, but not guaranteed. No representation or warranty expressed or implied. Broker not responsible for changes, errors, or omissions. All square footages are for convenience only. All critical measurements shall be done by Lessee or Buyer.





Suite 207: 653± SqFt
\$18.00/SqFt NNN

Suite 205: 222± SqFt
\$444/mo

**KIEMLE &
 HAGOOD
 COMPANY**

Information is deemed reliable, but not guaranteed. No representation or warranty expressed or implied. Broker not responsible for changes, errors, or omissions. All square footages are for convenience only. All critical measurements shall be done by Lessee or Buyer.