

PRAIRIE SHOPPING CENTER, SUITE 77

NORTH IDAHO'S PREMIER POWER CENTER 77 W. PRAIRIE, COEUR D'ALENE, ID



FEATURES

- 1,400 SF Available
- \$16 per square foot, NNN (\$1,867 Month)
- Estimated NNN's: \$3.12/PSF
- Can be combined with space 81

09 Demographics	1 Mile	3 Mile	5 Mile
09 Est Population	5,042	35,675	67,618
14 Proj Population	5,620	39,423	73,343
Proj Growth 09-14	3.4%	3.2%	2.8%
Est Average HHI	\$60,079	\$60,239	\$60,654
Est Median HHI	\$46,631	\$47,250	\$46,518

Traffic Counts	
Highway 95:	25,000± ADT
Government Way:	15,000± ADT
Prairie Avenue:	11,000± ADT



FOR LEASE

CONTACTS

Carl Guenzel
509.755.7543
carlg@khco.com

**KIEMLE &
HAGOOD
COMPANY**

601 W. Main Ave., #400
Spokane, WA 99201
Main: 509.838.6541
Fax: 509.458.4014
www.khco.com

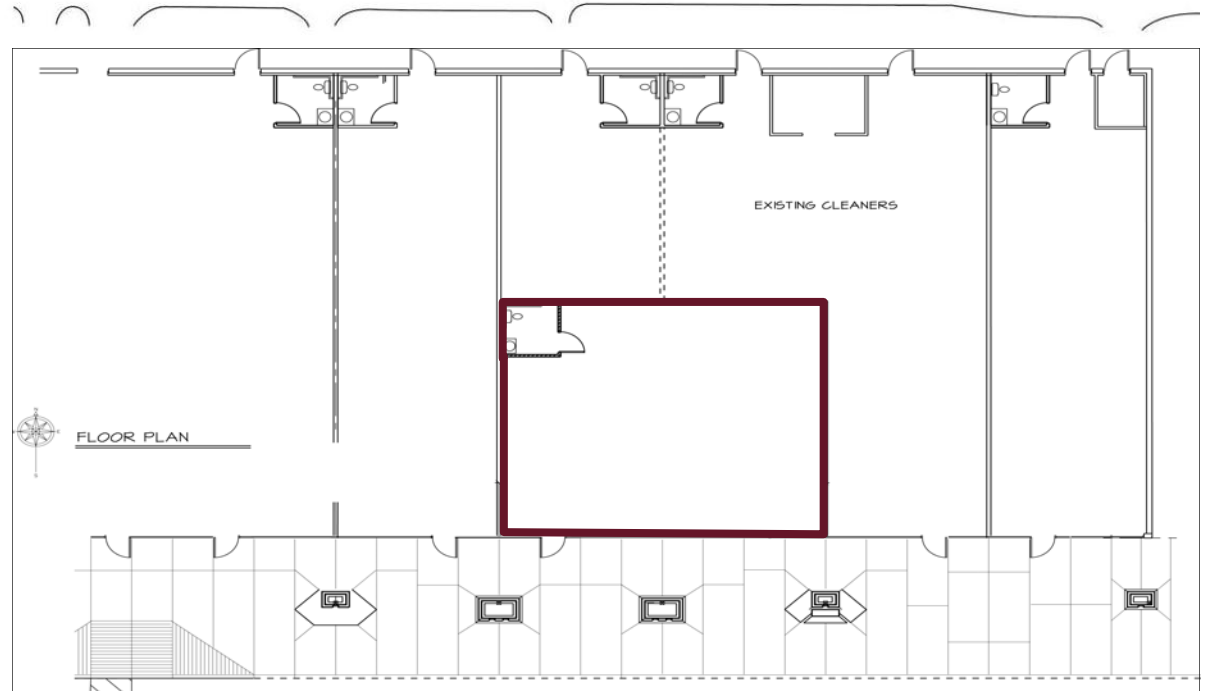
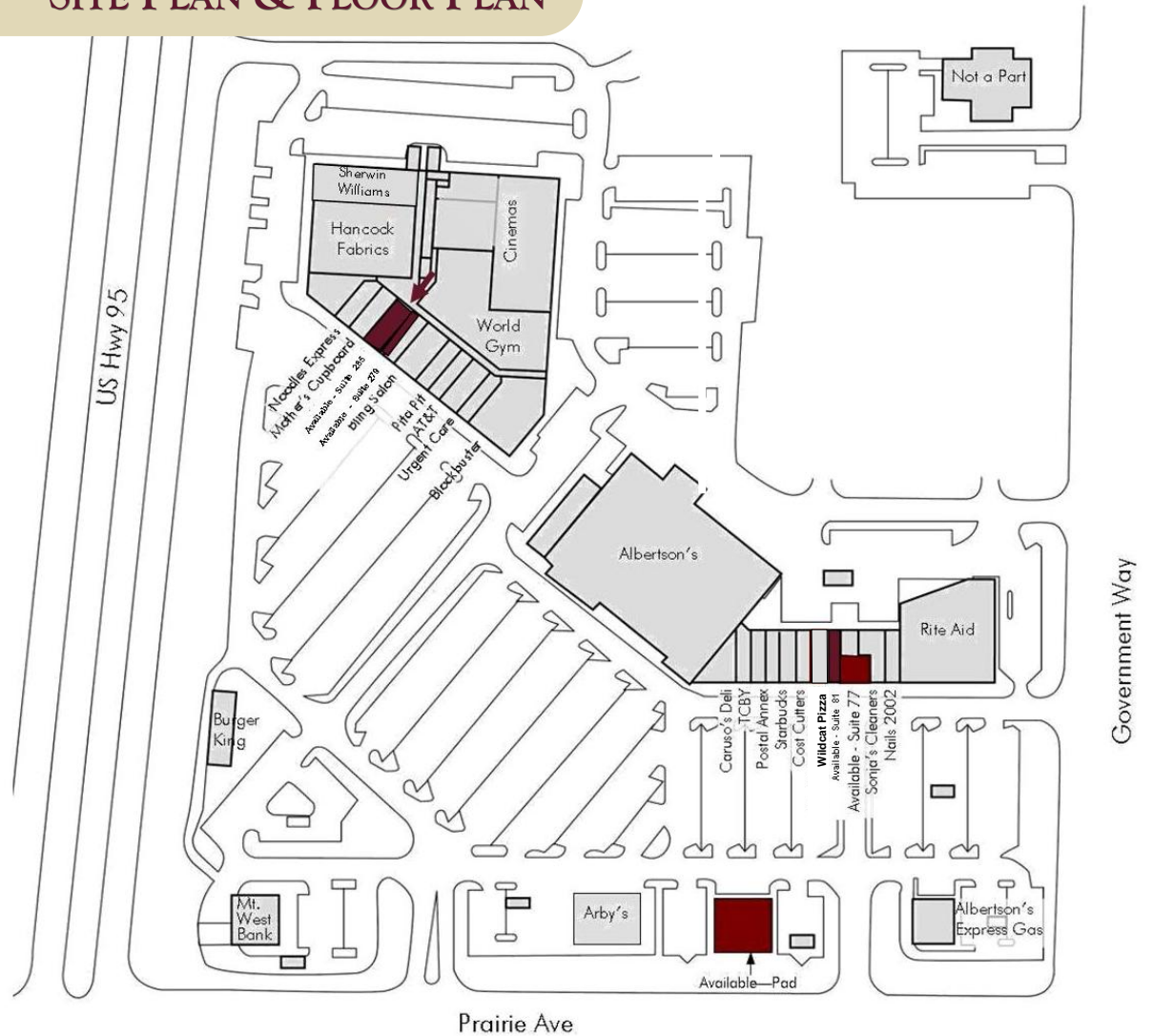
No warranty or representation, expressed or implied, is made by Kiemle & Hagood Company, its agents or its employees as to the accuracy of the information contained herein. All information furnished is from sources deemed reliable and submitted subject to errors, omissions, change of terms and conditions, prior sale, lease or financing, or withdrawal without notice. No one should rely solely on the above information, but instead should conduct their own investigation to independently satisfy themselves



SITE PLAN & FLOOR PLAN

Existing tenants include:

- Albertson's
- Rite Aid
- Blockbuster Video
- Hancock Fabrics
- Burger King
- Arby's
- Starbucks
- Cost Cutters
- Postal Annex
- Papa Murphy's Pizza
- TCBY
- Noodles Express
- Bling Salon
- Caruso's Deli
- Sonja's Cleaners
- Nails 2002
- Mother's Cupboard Nutrition
- American Family Insurance
- Pita Pit
- Urgent Care
- Sherwin Williams
- Wildcat Pizza



CONTACTS

Carl Guenzel
509.755.7543
carlg@khco.com



601 W. Main Ave., #400
 Spokane, WA 99201
 Main: 509.838.6541
 Fax: 509.458.4014
 www.khco.com

No warranty or representation, expressed or implied, is made by Kiemle & Hagood Company, its agents or its employees as to the accuracy of the information contained herein. All information furnished is from sources deemed reliable and submitted subject to errors, omissions, change of terms and conditions, prior sale, lease or financing, or withdrawal without notice. No one should rely solely on the above information, but instead should conduct their own investigation to independently satisfy themselves

