

# NORTH ATLAS & MILES ROAD HAYDEN, IDAHO 83835

## FOR SALE: PRIME INDUSTRIAL LAND

**\$699,900**

**(\$1.60/SqFt)**

**10± acres**

**435,600± SqFt**

For more information,  
please contact:

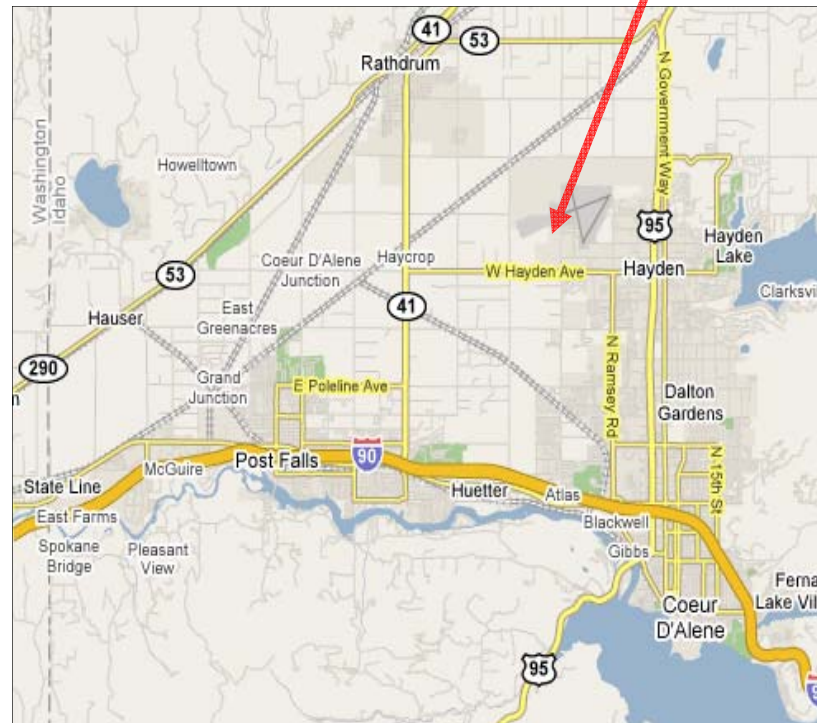
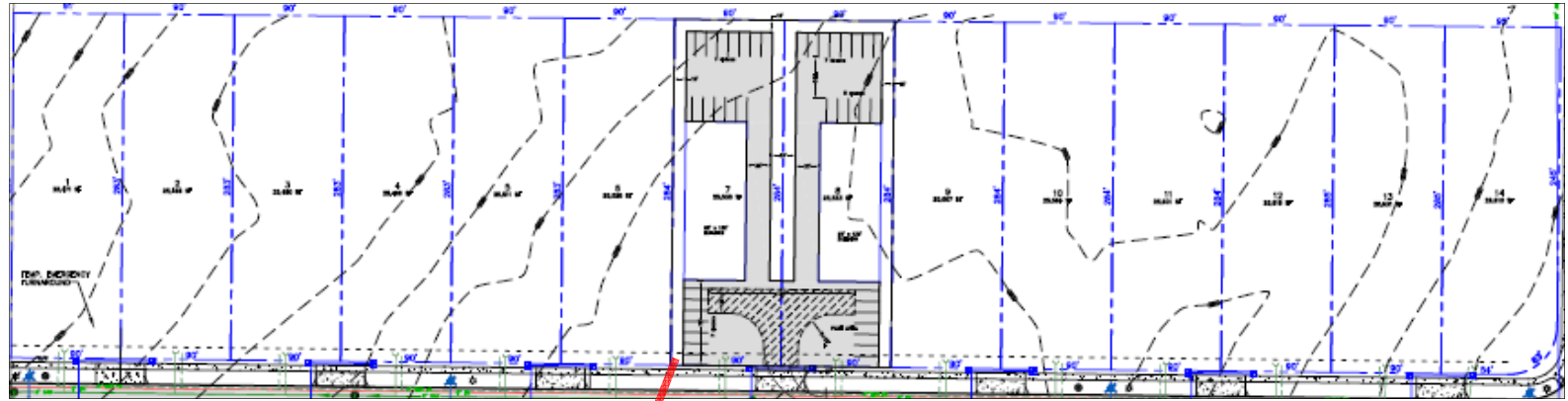
### CASEY BRAZIL

Branch Manager/  
Associate Broker  
208.770.2595  
casey.brazil@khco.com

### CHRIS SCHREIBER, CCIM

Associate Broker  
208.770.2593  
chris.schreiber@khco.com

**KIEMLE &  
HAGOOD  
COMPANY**

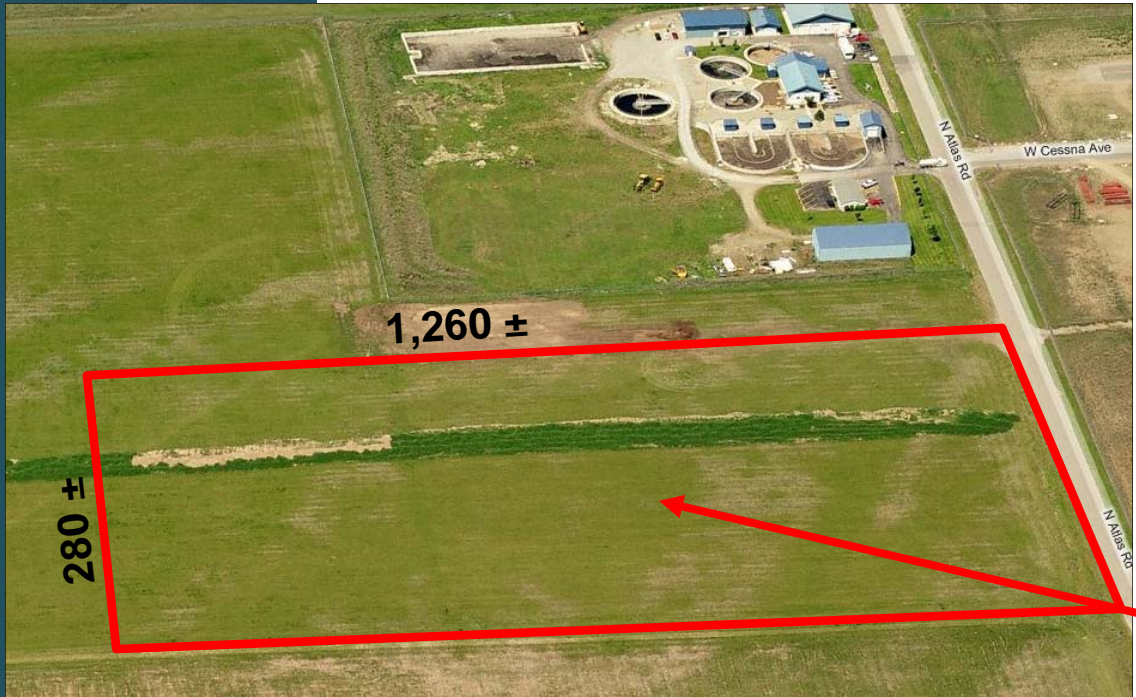


- 10± Acres with up to 14 lots possible;
- \$699,900 (Approximately **\$1.60/SqFt**);
- Light Industrial Zoning, City of Hayden;
- Property is ready to pull permits;
- Preliminary plat approved;
- Includes all engineering and construction plans;
- Purchase a portion or the entire site;
- All utilities on site including water, sewer, phone & power;
- Near the entrance to the Coeur d'Alene Airport

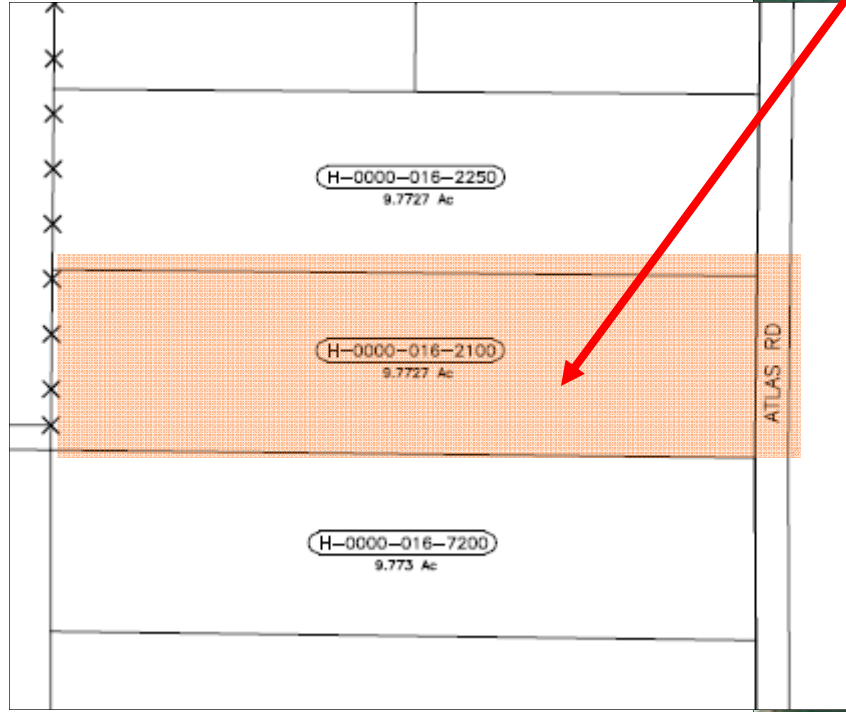
*Information is deemed reliable, but not guaranteed. No representation or warranty expressed or implied. Broker not responsible for changes, errors, or omissions. All square footages are for convenience only. All critical measurements shall be done by Lessee or Buyer.*



# Proposed for Multiple Tenant Light Industrial Development



10± Acres (435,600± SqFt)  
 1,260' x 280' approx dimensions  
 16-51N-16W, Boise Meridian  
 City of Hayden  
 Kootenai County, Idaho  
 Property ID: H00000162100  
 Tax ID: 136333  
 2009 Taxes: \$5,044



**KIEMLE &  
 HAGOOD  
 COMPANY**

*Information is deemed reliable, but not guaranteed. No representation or warranty expressed or implied. Broker not responsible for changes, errors, or omissions. All square footages are for convenience only. All critical measurements shall be done by Lessee or Buyer.*

