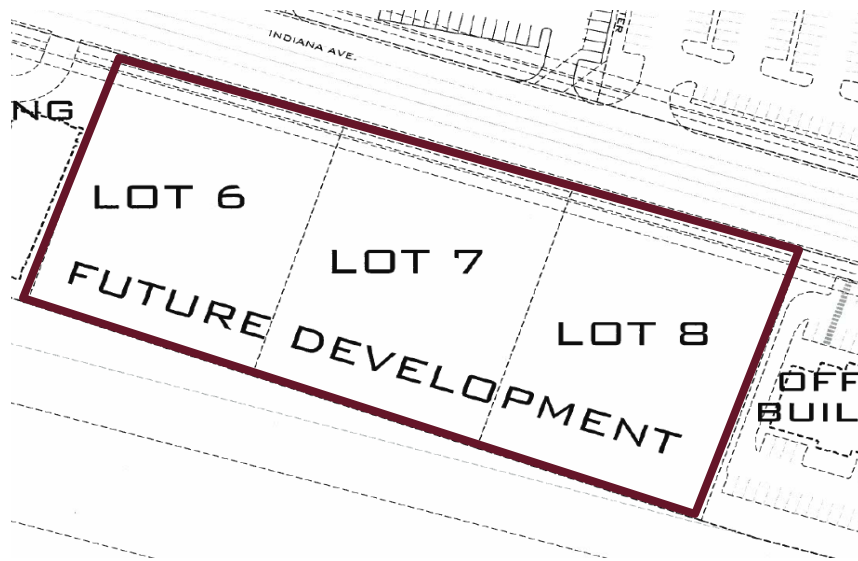


HANSON CENTER EAST - LOTS 6,7 & 8



PROFESSIONAL LOTS SPOKANE VALLEY, WA BUILD-TO-SUIT OR SALE OPPORTUNITY



Nearby Amenities:

- Honey Baked Ham
- Sears
- JC Penny's
- Barnes & Noble
- Best Buy
- Sports Authority
- Staples
- Jo-Ann Fabrics
- Sportsman's Warehouse
- Old Navy
- Macy's
- Pier 1
- TJ Maxx
- Black Angus
- IHOP
- Outback Steakhouse
- Krispy Kreme
- Tony Roma's
- Regal Spokane Valley 12 Theater
- Lowe's
- Kohl's
- Wal Mart
- Ross
- New Hampton Inn Suites
- Garden Inn
- Hooters

- Lot 6: 43,506 SF - Approx Size: 185' x 230'
- Lot 7: 44,526 SF - Approx Size: 185' x 237'
- Lot 8: 45,793 SF - Approx Size: 185' x 244'
- Price: \$15.00 PSF
- Freeway Visibility
- Price Includes traffic mitigation
- All Utilities Stubbed to Site
- Zoned Mixed Use Center
- Pad Ready for Construction

CONTACT

Carl Guenzel
509.755.7543-Direct
carlg@khco.com

Kiemle & Hagood Company
601 W. Main Ave, Ste 400
Spokane, WA 99201
509.838.6541-Phone
509.458.4014-Fax
www.khco.com

09 Demographics	1 Mile	5 Mile	10 Mile	15 Mile
09 Est Population	4,823	93,315	233,963	439,918
14 Proj Population	5,537	103,904	260,863	485,589
Proj Annual Growth 09-14	3.0%	2.3%	2.3%	2.1%
09 Average HHI	\$54,787	\$59,680	\$61,238	\$61,511
09 Median HHI	\$44,635	\$51,296	\$50,624	\$50,346

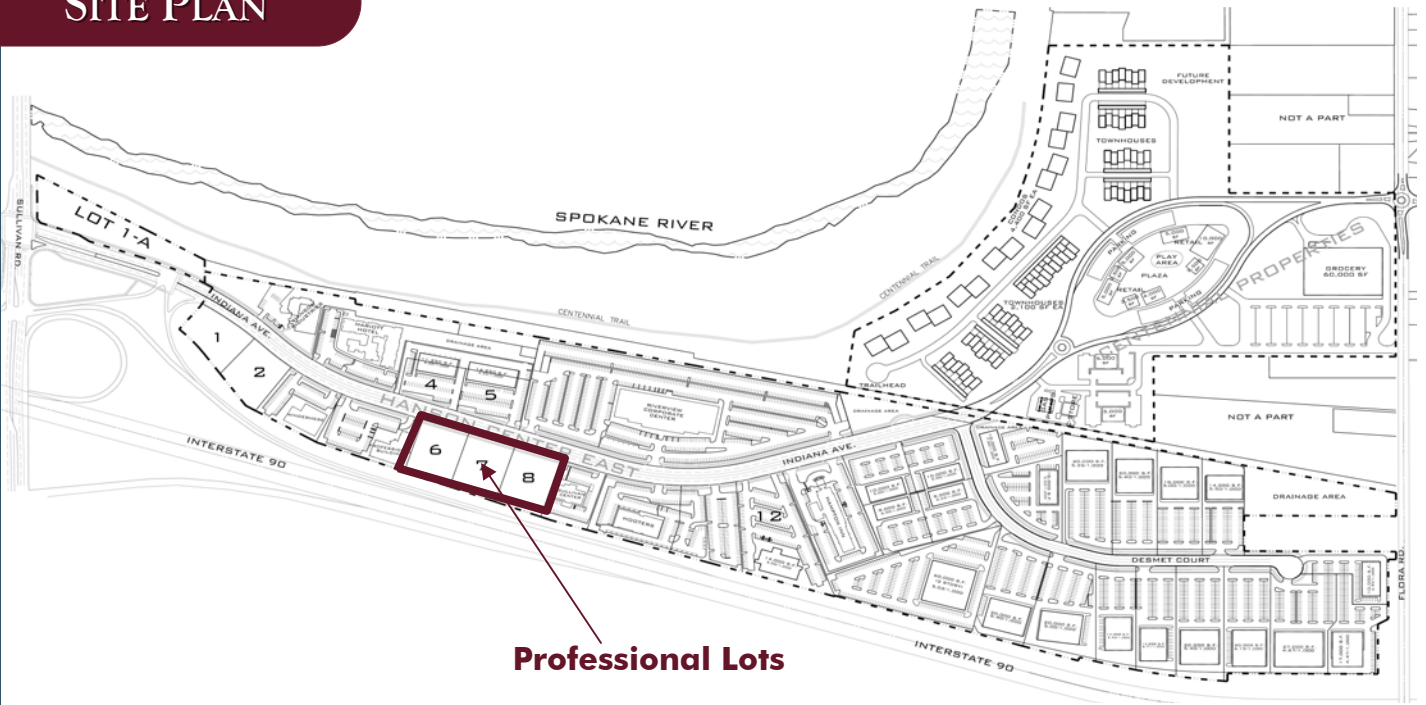
Traffic Counts (ADT)

Sullivan & Indiana	28,300
From South on Evergreen	12,542
From West on Indiana	8,214
From East on Indiana	12,668

No warranty or representation, expressed or implied, is made by Kiemle & Hagood Company, its agents or its employees as to the accuracy of the information contained herein. All information furnished is from sources deemed reliable and submitted subject to errors, omissions, change of terms and conditions, prior sale, lease or financing, or withdrawal without notice. No one should rely solely on the above information, but instead should conduct their own investigation to independently satisfy themselves

**KIEMLE &
HAGOOD
COMPANY**

SITE PLAN



MAP



No warranty or representation, expressed or implied, is made by Kiemle & Hagood Company, its agents or its employees as to the accuracy of the information contained herein. All information furnished is from sources deemed reliable and submitted subject to errors, omissions, change of terms and conditions, prior sale, lease or financing, or withdrawal without notice. No one should rely solely on the above information, but instead should conduct their own investigation to independently satisfy themselves

**KIEMLE &
HAGOOD
COMPANY**