

HANSON CENTER EAST - LOTS 1 & 2



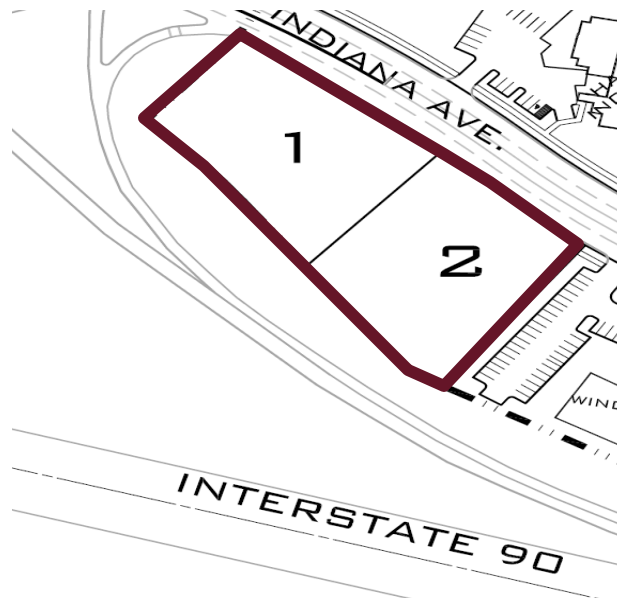
RESTAURANT PAD

SPOKANE VALLEY, WA

FOR LEASE, BUILD-TO-SUIT, OR SALE

Nearby Amenities:

- Honey Baked Ham
- Sears
- JC Penny's
- Barnes & Noble
- Best Buy
- Sports Authority
- Staples
- Jo-Ann Fabrics
- Sportsman's Warehouse
- Old Navy
- Macy's
- Pier 1
- TJ Maxx
- Black Angus
- IHOP
- Outback Steakhouse
- Krispy Kreme
- Tony Roma's
- Regal Spokane Valley 12 Theater
- Lowe's
- Kohl's
- Wal Mart
- Ross
- New Hampton Inn Suites
- Garden Inn
- Hooters



- Sale Price: \$18/SF
- Lot Size: 82,261 SF
- Parking: 4.29 Stalls/1,000 SF
- Contact Listing Brokers for Lease Pricing Information & Conceptual
- Property can be split in two
- Freeway Visibility
- All Utilities Stubbed to Site
- Zoned Mixed Use Center
- Pad Ready for Construction
- Vested traffic is available, see broker for cost and details.

CONTACT

Carl Guenzel
509.755.7543-Direct
carlg@khco.com

Kiemle & Hagood Company
 601 W. Main Ave, Ste 400
 Spokane, WA 99201
 509.838.6541-Phone
 509.458.4014-Fax
 www.khco.com

09 Demographics	1 Mile	5 Mile	10 Mile	15 Mile
09 Est Population	4,823	93,315	233,963	439,918
14 Proj Population	5,537	103,904	260,863	485,589
Proj Annual Growth 09-14	3.0%	2.3%	2.3%	2.1%
09 Average HHI	\$54,787	\$59,680	\$61,238	\$61,511
09 Median HHI	\$44,635	\$51,296	\$50,624	\$50,346

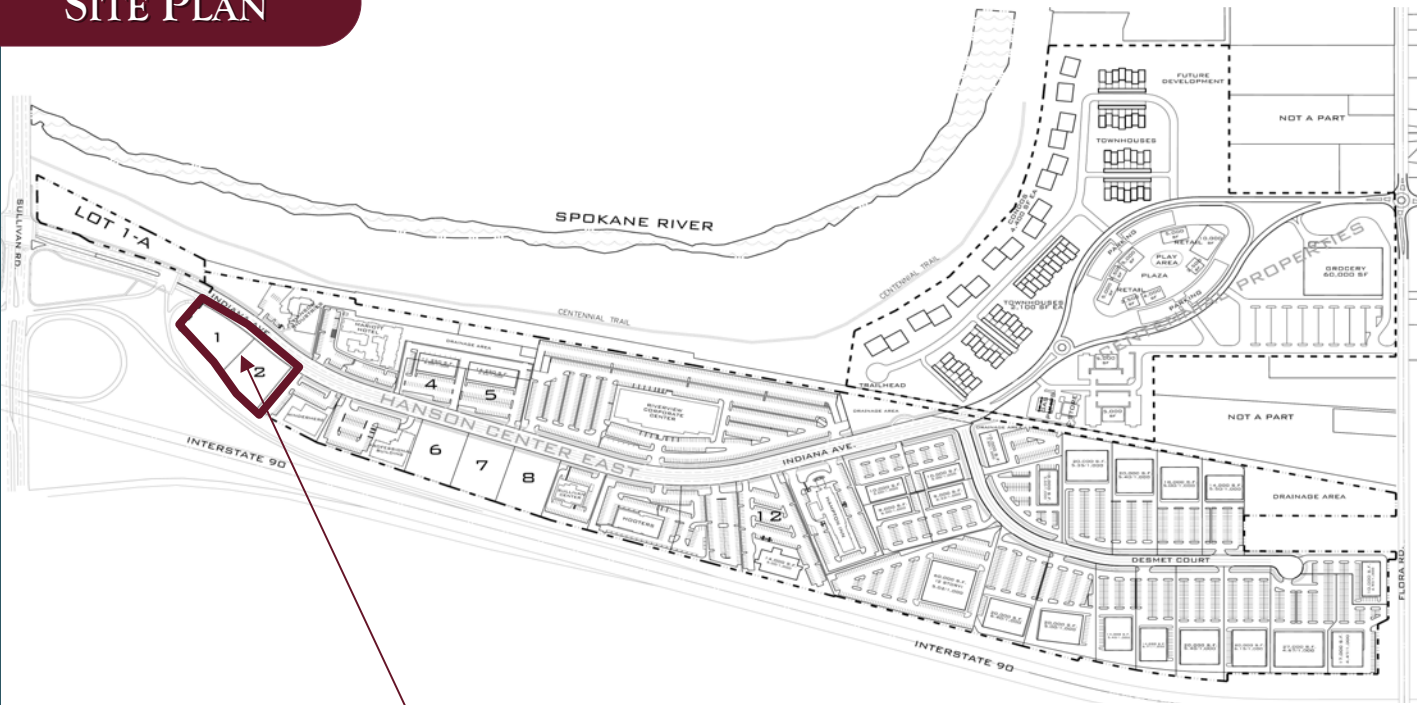
Traffic Counts (ADT)

Sullivan & Indiana	28,300
From South on Evergreen	12,542
From West on Indiana	8,214
From East on Indiana	12,668

No warranty or representation, expressed or implied, is made by Kiemle & Hagood Company, its agents or its employees as to the accuracy of the information contained herein. All information furnished is from sources deemed reliable and submitted subject to errors, omissions, change of terms and conditions, prior sale, lease or financing, or withdrawal without notice. No one should rely solely on the above information, but instead should conduct their own investigation to independently satisfy themselves

**KIEMLE &
 HAGOOD
 COMPANY**

SITE PLAN



Restaurant Pad

MAP



No warranty or representation, expressed or implied, is made by Kiemle & Hagood Company, its agents or its employees as to the accuracy of the information contained herein. All information furnished is from sources deemed reliable and submitted subject to errors, omissions, change of terms and conditions, prior sale, lease or financing, or withdrawal without notice. No one should rely solely on the above information, but instead should conduct their own investigation to independently satisfy themselves