

1050 BALDY PARK ROAD SANDPOINT, IDAHO 83864

FOR SALE: INDUSTRIAL/WHOLESALE FACILITY

Offered at
\$399,000

Buildings:
10,000± SqFt
Land:
39,857± SqFt

- Quality Industrial Wholesale Building;
- Great opportunity for local owner occupant;
- Approx 10,000± SqFt under roof on 1± acre of industrial land;
- Priced well below replacement cost;
- Submit all offers for consideration;
- Total Land: 39,857± SqFt;
- Concrete Floor Throughout;
- Extensive covered area for equipment, vehicle or inventory storage;
- High efficiency lighting;
- Plumbed for overhead heating in warehouse;
- 3-Phase Commercial Power;
- Fenced yard;
- Easy access with all city services!

For more information,
please contact:

CHRIS SCHREIBER, CCIM

Associate Broker

208.770.2593



chris.schreiber@khco.com

**KIEMLE &
HAGOOD
COMPANY**



Information is deemed reliable, but not guaranteed. No representation or warranty expressed or implied. Broker not responsible for changes, errors, or omissions. All square footages are for convenience only. All critical measurements shall be done by Lessee or Buyer.



For more information,
please contact:

CHRIS SCHREIBER, CCIM

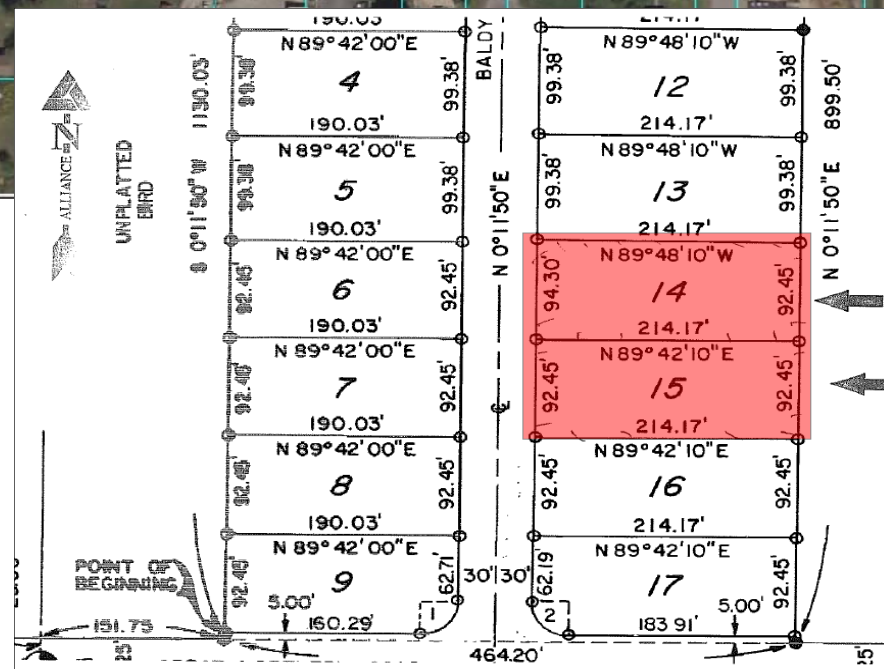
Associate Broker

208.770.2593



chris.schreiber@khco.com

**KIEMLE &
HAGOOD
COMPANY**



- ±1 Acre (39,857± SqFt)
- Sec 15N/Twn 57N/Rng 2W (BM)
- City of Sandpoint, Bonner County, Id
- Tax Id# RPS0635000014BA

Information is deemed reliable, but not guaranteed. No representation or warranty expressed or implied. Broker not responsible for changes, errors, or omissions. All square footages are for convenience only. All critical measurements shall be done by Lessee or Buyer.

