

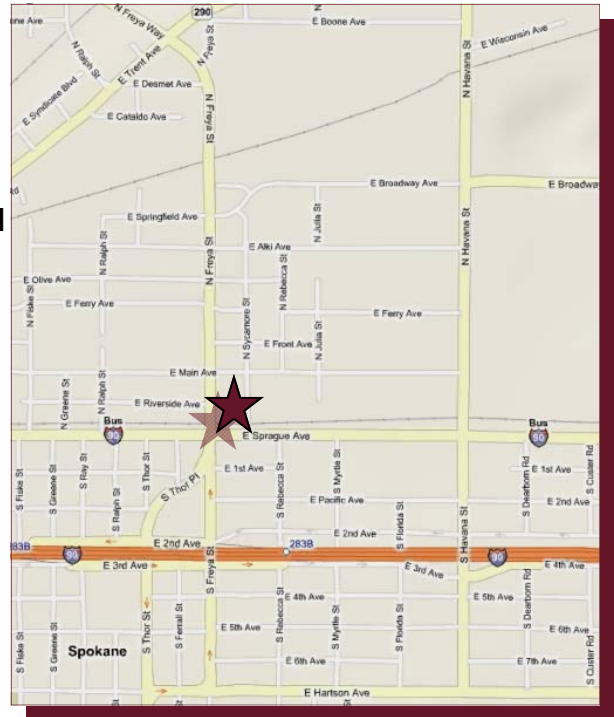
# OFFICE SPACE



## 3625 E. SPRAGUE AVENUE

### FEATURES

**Price:** \$1,500/MO/NNN  
**Square Feet:** 1,800  
**Parcel No.:** 35154.0004



Average Daily Traffic Count  
 2006-2007 per City of Spokane:

**Freya @ Sprague: 23,000 ADT**

### Demographics 2009

	1 Mile	3 Mile	5 Mile
Population	6,846	84,045	211,331
% Pop Change 00-09	0.5%	0.8%	0.8%
% Pop Change 09-14	0.3%	0.8%	0.8%
Ave HH Income	\$47,592	\$53,327	\$54,764
Med HH Income	\$38,028	\$41,317	\$42,893

*No warranty or representation, expressed or implied, is made by Kiemle & Hagood Company, it's agents or it's employees as to the accuracy of the information contained herein. All information furnished is from sources deemed reliable and submitted subject to errors, omissions, change of terms and conditions, prior sale, lease or financing, or withdrawal without notice. No one should rely solely on the above information, but instead should conduct their own investigation to independently satisfy themselves.*

# FOR LEASE

### CONTACT

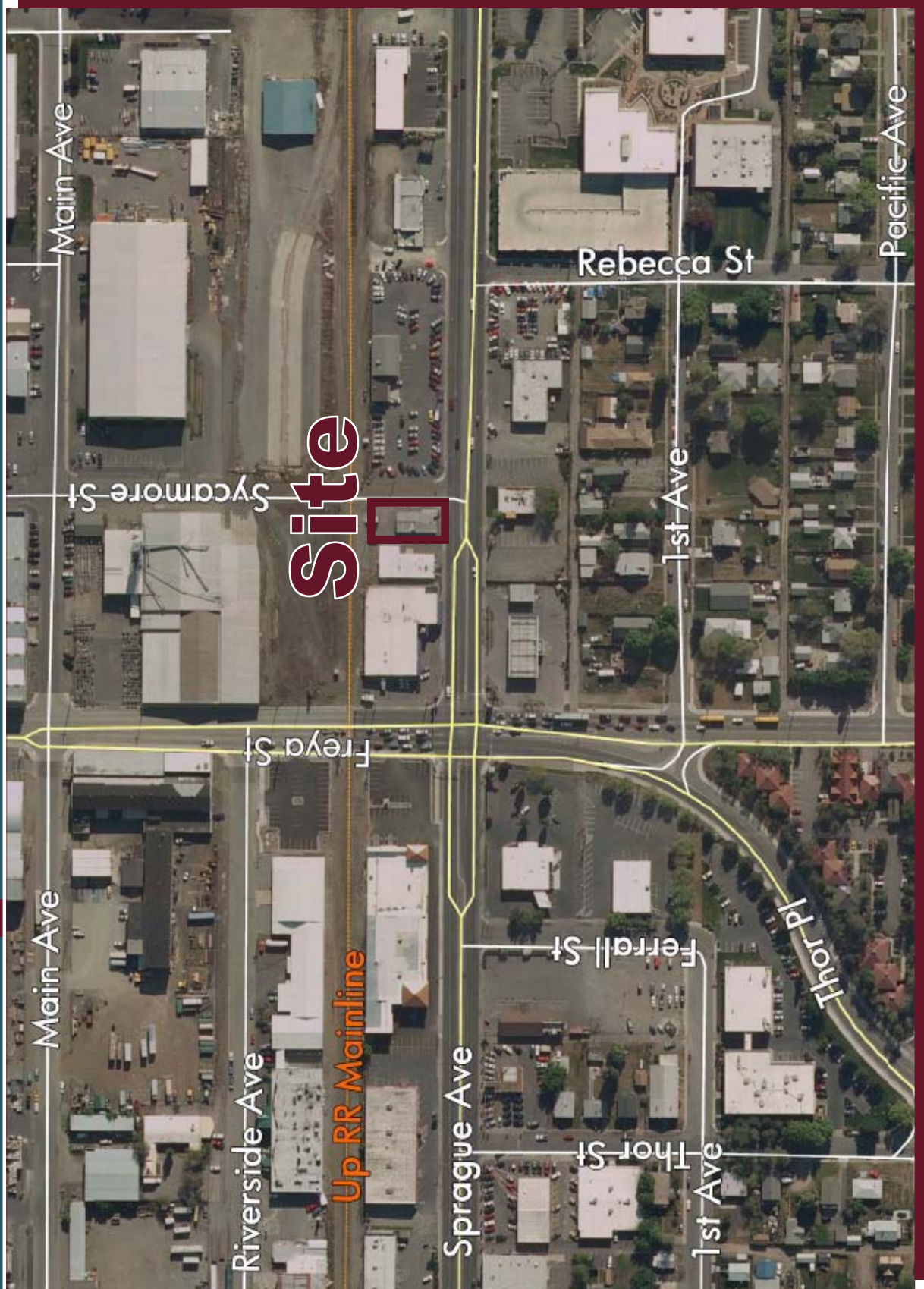
**Erik Nelson**  
 509.755.7514  
 erik.nelson@khco.com

**Cody George**  
 509.755.7529  
 cody.george@khco.com

**KIEMLE &  
 HAGOOD  
 COMPANY**

601 W. Main Ave.  
 Suite 400  
 Spokane, WA 99201  
 Main Phone:  
 509.838.6541  
 Fax: 509.458.4014  
 khco.com

# AERIAL



## CONTACT

**Erik Nelson**  
509.755.7514  
erik.nelson@khco.com

**Cody George**  
509.755.7529  
cody.george@khco.com

601 W. Main Ave.  
Suite 400  
Spokane, WA 99201  
Main Phone:  
509.838.6541  
Fax: 509.458.4014  
khco.com

*No warranty or representation, expressed or implied, is made by Kiemle & Hagood Company, its agents or its employees as to the accuracy of the information contained herein. All information furnished is from sources deemed reliable and submitted subject to errors, omissions, change of terms and conditions, prior sale, lease or financing, or withdrawal without notice. No one should rely solely on the above information, but instead should conduct their own investigation to independently satisfy themselves*

**KIEMLE &  
HAGOOD  
COMPANY**