

WASHINGTON TRUST FINANCIAL CENTER

FOR LEASE 717 W. SPRAGUE AVENUE

TENANT'S INCLUDE:

- Washington Trust Bank
- Lukins & Annis PS
- Paine Hamblen LLP
- CH2M Hill
- Morgan Stanley Smith Barney
- Domini's

OFFICE SPACE FOR LEASE



Property Features:

- ☞ Built in 1973 - Opened in 1974
- ☞ Central Downtown Location
- ☞ On-Site Parking Garage
- ☞ On-Site Security
- ☞ Key-Card Access
- ☞ Parcel 35192.0708
- ☞ On-Site Sandwich Shop

SPACE AVAILABLE:

5TH FLOOR
1,622 RSF

11TH FLOOR
~~3,821 RSF~~
LEASED

PLEASE CONTACT

Cody George
Broker

509.755.7529 - Direct
509.458.4014 - Fax
cody.george@khco.com

Doug Dittamore
Broker

509.755.7571 - Direct
509.458.4014 - Fax
doug@khco.com

**KIEMLE &
HAGOOD
COMPANY**

601 W. Main Ave., Suite 400
Spokane, WA 99201
Main Phone: 509.838.6541
Fax: 509.458.4014
WWW.KHCO.COM

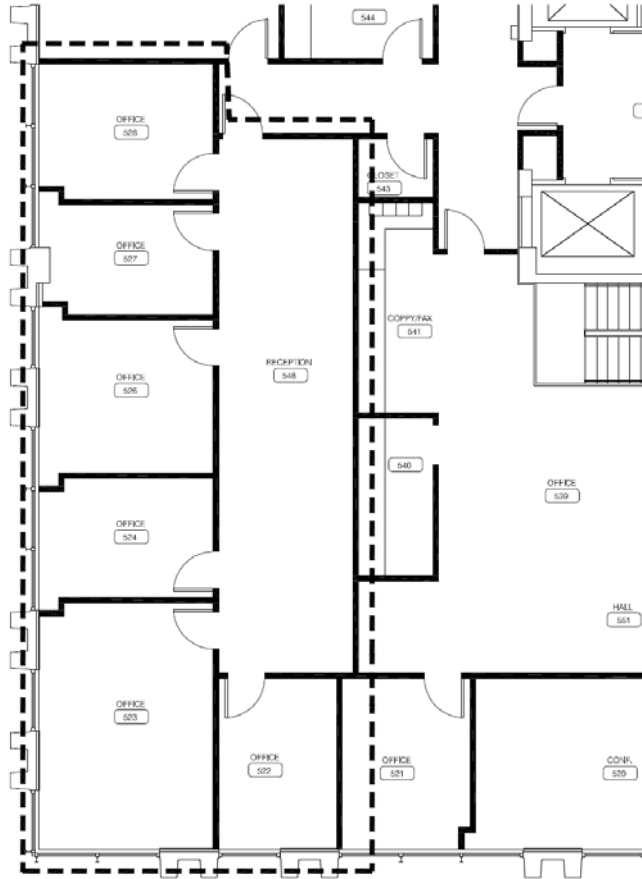


LEASE RATE: \$22.00 / RSF / FULL SERVICE

No warranty or representation, expressed or implied, is made by Kiemle & Hagood Company, its agents or its employees as to the accuracy of the information contained herein. All information furnished is from sources deemed reliable and submitted subject to errors, omissions, change of terms and conditions, prior sale, lease or financing, or withdrawal without notice. No one should rely solely on the above information, but instead should conduct their own investigation to independently satisfy themselves.

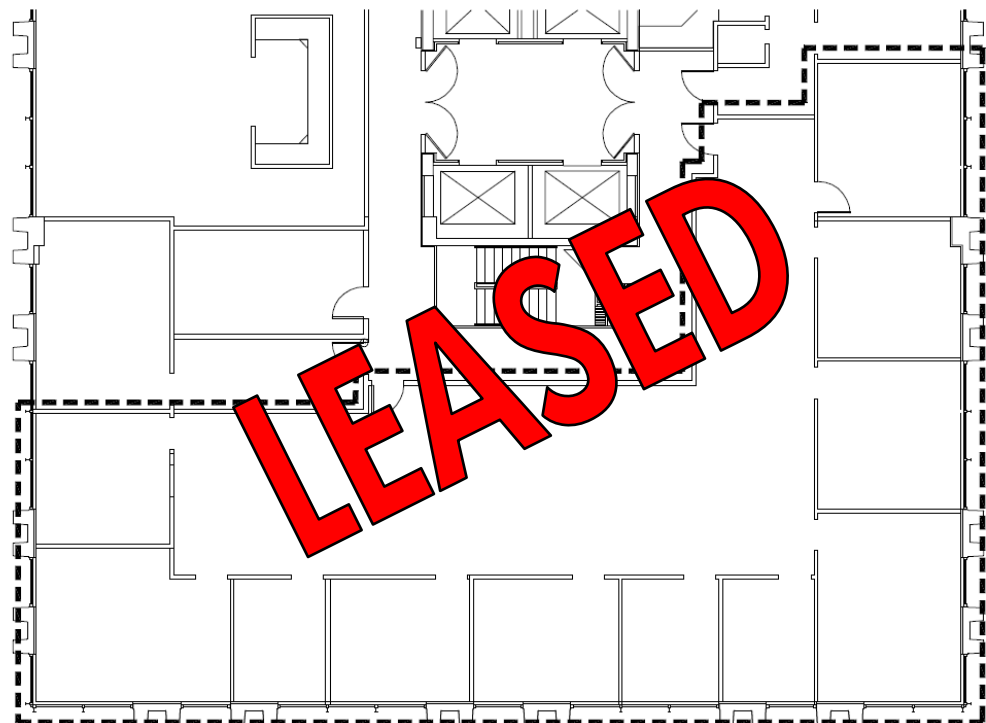
WASHINGTON TRUST FINANCIAL CENTER

FLOOR PLANS



WTFC 5TH FLOOR TENANT SPACE (AVAILABLE FOR LEASE)
SCALE: 1/8" = 1'-0"

1,622 RSF



WTFC 11TH FLOOR TENANT SPACE (AVAILABLE FOR LEASE)
SCALE: 3/32" = 1'-0"

3,821 RSF

WASHINGTON TRUST FINANCIAL CENTER

AERIAL

